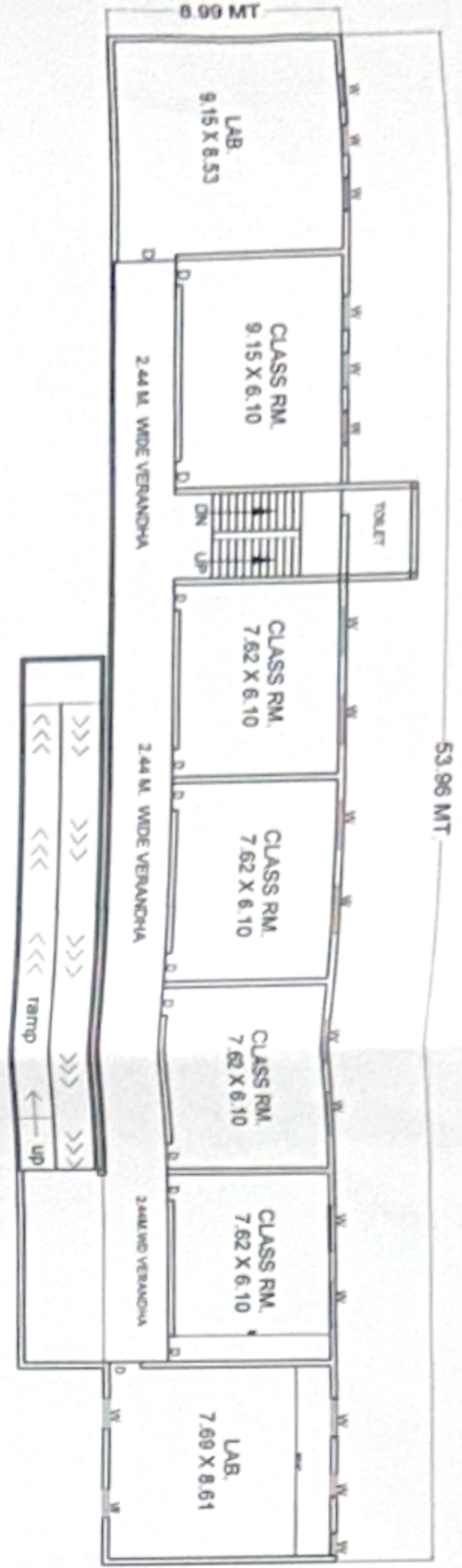
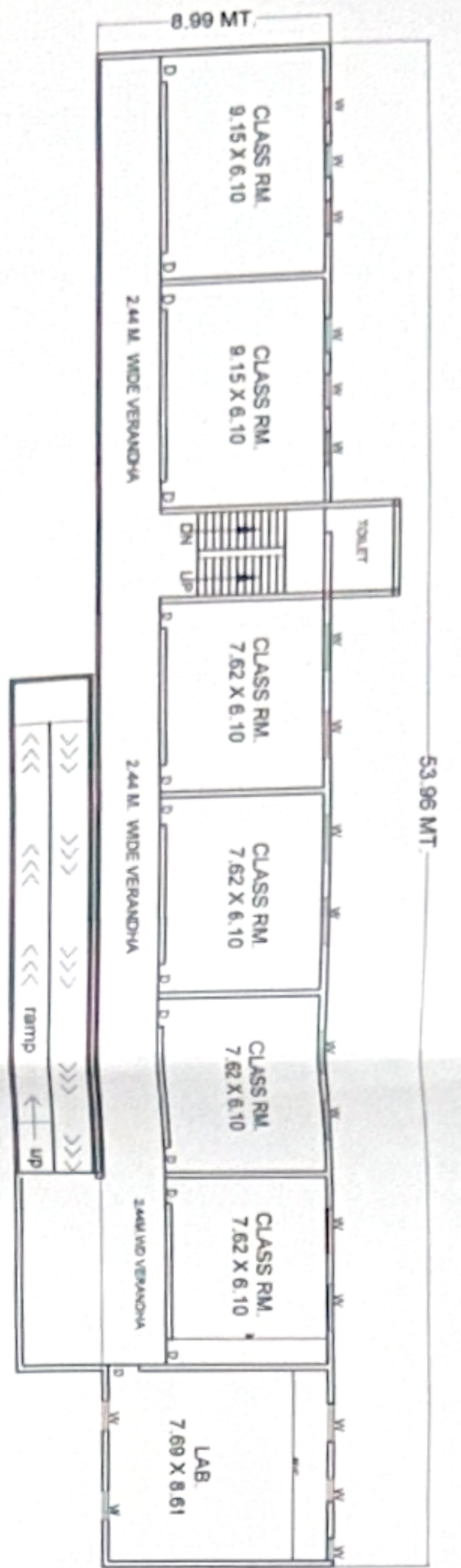


THIRD FLOOR PLAN



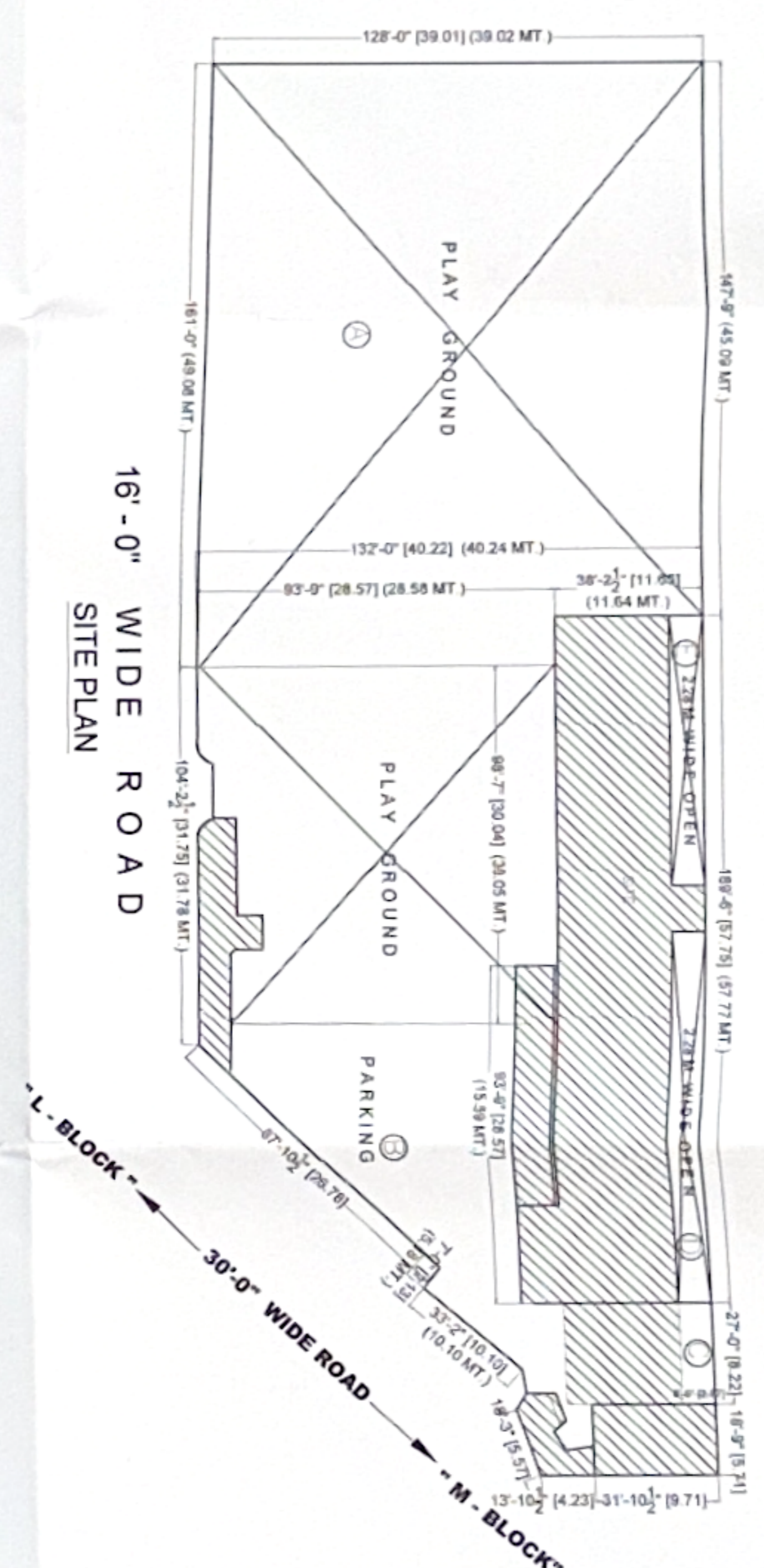
SECOND FLOOR PLAN



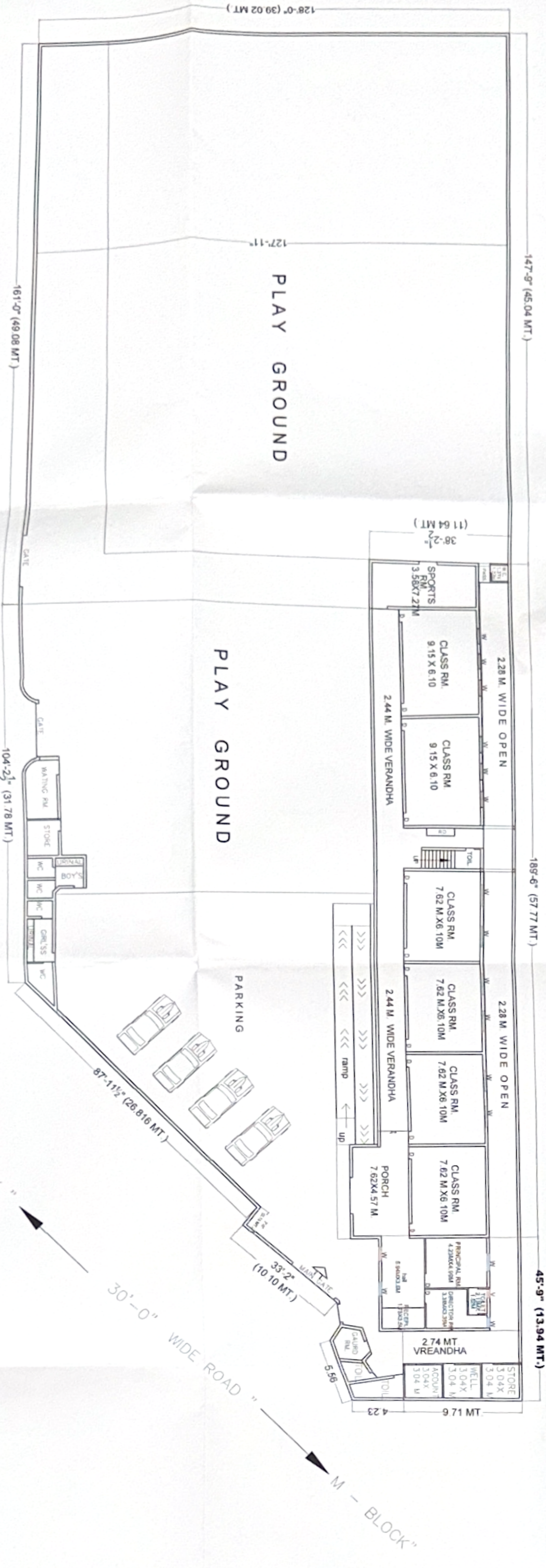
FIRST FLOOR PLAN



16'-0" WIDE RASTA
KEY PLAN



16'-0" WIDE ROAD
SITE PLAN



16'-0" WIDE ROAD
GROUND FLOOR PLAN

S. NO.	AREA CHART	SQ. MT.
1.	TOTAL AREA OF THE LAND	4100.00
2.	OPEN AREA DETAIL ON GR. FLOOR	2543.61
A	PLAY GROUND (ODD SIZE)	510.38
B	PARKING SPACE (ODD SIZE)	21.13
C	OPEN SPACE (8.22 X 2.57)	109.53
D	REAR OPEN (ODD SIZE)	60.38
E	REAR OPEN (ODD SIZE)	60.38
3.	TOTAL OPEN AREA ON GR. FLOOR	3445.03
4.	COVD. AREA ON GROUND FLOOR	854.97
5.	COVD. AREA ON FIRST FLOOR	664.92
6.	COVD. AREA ON SECOND FLOOR	664.92
7.	TOTAL COVD. AREA (4 + 5 + 6)	2184.81

"PARAMHANS PUBLIC SCHOOL"
PARAMHANS FOUNDATION "M-BLOCK"
SANJAY NAGAR GHAZIABAD (U.P.)

REMARK:-

NAME OF SCHOOL	ACADEMIC BLOCK
PARAMHANS PUBLIC SCHOOL	
KHASRA NO.- 1057, 1058 & 1059	TOTAL COVD. AREA ALL FLOOR'S = 2184.81 SQ. MT.
TOTAL LAND AREA = 4100.00 SQ. MT.	

SCALE



APPLICANT SIGN:-
(Signature)
MANAGER
PARAMHANS JUNIOR HIGH SCHOOL
M-BLOCK SANJAY NAGAR GHAZIABAD

ARCHITECT SIGN:-
(Signature)
PARAMHANS RATHI
CA/2017/185502
52, Narayn Market
Ghaziabad